



# Roxtec Durchführung CF 24

Zu öffnende Durchführung für Schränke und Gehäuse.

Die Roxtec-Einführungsichtung CF 24 hat einen Rahmen aus Aluminium, dessen Teile miteinander verschraubt werden. Die Kompression ist in den Rahmen integriert. Der Rahmen lässt sich zur einfachen Installation um vorhandene Kabel zerlegen. Das Produkt wird als fertiges Kit mit allen benötigten Komponenten geliefert.



- Leichtgewichtig
- Platzsparend
- Perfekt für die Nachrüstung

## Produkteigenschaften



Feuerhemmend



IP/UL NEMA

## Aufbau der Installation



Schaltschränke und Gehäuse

## Klassifizierungen und Zertifikate

### Feuer

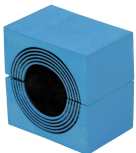
- E/EI-Klassifizierung gemäß EN 45545 E30

### Dichtigkeit

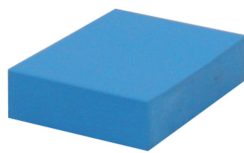
- IP 66/67

## Daten der Abdichtungskomponenten

### Dichtkomponenten



Roxtec-Module CM mit Multidiameter™



Roxtec-Füll- und Ausgleichsmodul CM



Roxtec-Ankerscheibe C



Gleitmittel

Weitere Informationen finden Sie unter [www.roxtec.com](http://www.roxtec.com).

## Vorkonfigurierte Durchführungs-Kits

mm/kg



CF 24/8



CF 24/12



CF 24/28

Title	Konfiguration	Außenabmessungen WxHxD	Öffnungsmaße w x h	Gewicht	Art. Nr.
CF 24/8	8x (10.0-25.0)	209 x 100 x 30	170(-2) x 60	1.5	CF00000240035
CF 24/12	8x (3.5-16.5), 4x (9.5-32.5)	209 x 100 x 30	170(-2) x 60	1.5	CF00000241235
CF 24/28	16x (3.5-16.5), 12x (3.5-10.5)	209 x 100 x 30	170(-2) x 60	1.5	CF00000242835



The product information provided by Roxtec does not release the purchaser of the Roxtec system, or part thereof, from the obligation to independently determine the suitability of the products for the intended process, installation and/or use.

Roxtec gives no guarantee for the Roxtec system or any part thereof and assumes no liability for any loss or damage whatsoever, whether direct, indirect, consequential, loss of profit or otherwise, occurred or caused by the Roxtec systems or installations containing components not manufactured by an authorized manufacturer and/or occurred or caused by the use of the Roxtec system in a manner or for an application other than for which the Roxtec system was designed or intended.

Roxtec expressly excludes any implied warranties of merchantability and fitness for a particular purpose and all other express or implied representations and warranties provided by statute or common law. User determines suitability of the Roxtec system for intended use and assumes all risk and liability in connection therewith. In no event shall Roxtec be liable for indirect, consequential, punitive, special, exemplary or incidental damages or losses.

The Roxtec products are offered and sold in accordance with the conditions of the Roxtec General Terms of Sales. The latest version of the Roxtec General Terms of Sales can be downloaded from <https://www.roxtec.com/en/about-us/about-roxtec/general-terms-of-sales/>

We reserve the right to make changes to the product and technical information without further notice. Any errors in print or entry are no claims for indemnity. The content of this publication is the property of Roxtec International AB and is protected by copyright.

This document was generated on: 2024-04-06